

MODULAR L

basic package

what is **included**
in the basic package:

- 1.1 External structural walls 35.2 cm: **800 full elements.**
- 1.2 External structural walls 35.2 cm: **100 half elements.**
- 1.3 Partition walls thickness SYSTEM 3E elements 11.5 cm.
Internal structural walls 11.5 cm: **319 elements.**
- 1.4 Partition walls thickness SYSTEM 3E elements 11.5 cm.
Internal structural walls 17.5 cm: **70 elements.**
- 1.5 Detailed manual of how to install walls in SYSTEM 3E technology

what is **not included**
in the basic package:

- 1.1 Foundations and installations.
- 1.2 Vertical insulation of external walls with bituminous sealants up to a height of 30 cm above ground level.
- 1.3 Horizontal insulation/technological overlay under S3E walls.
- 1.4 Monolithic reinforced concrete ceilings.
- 1.5 Insulation of reinforced concrete elements in the body of the building with PIR panels 12 cm thick.

total price: 24 677.00 € net
~~28 378.00 € net~~
[+ local tax and transportation costs]

MODULAR

by SYSTEM 3E

SYSTEM 3E S.A.
Rondo ONZ 1
00-124 Warsaw

KRS: 0000796932
NIP: 5252796952
REGON: 383992453

contact@system3e.com
+48 533 344 918
www.system3e.com



MODULAR L

Building area: 98,13 m²

Usable area: 78,68 m²

Amount of elements: 735

Rooms dimensions:

1.1 Entry: 4.22 m²

1.2 Living room: 29.10 m²

1.3 Kitchen: 6.57 m²

1.4 Tech. room: 4.02 m²

1.5 Toilet: 2.85 m²

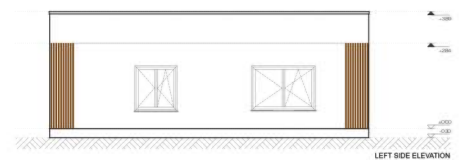
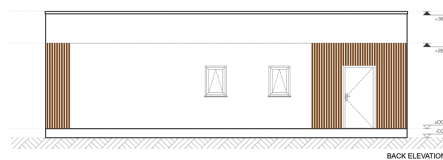
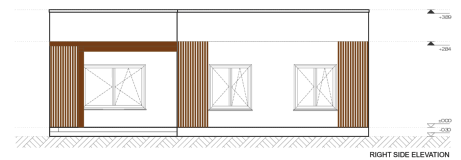
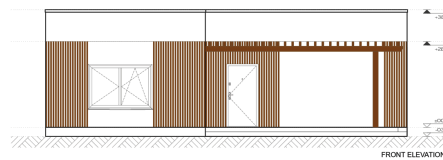
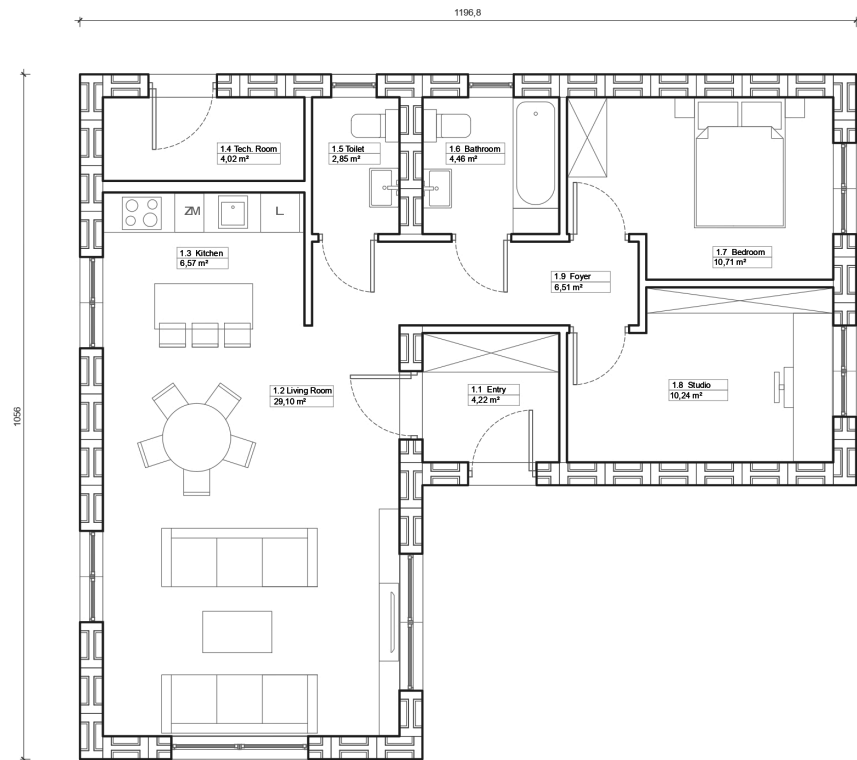
1.6 Bathroom: 4.46 m²

1.7 Bedroom: 10.71 m²

1.8 Studio: 10.24 m²

1.9 Foyer: 6.51 m²

[CLICK TO ORDER!](#) →



MODULAR

by SYSTEM 3E

SYSTEM 3E S.A.
Rondo ONZ 1
00-124 Warsaw

KRS: 0000796932
NIP: 5252796952
REGON: 383992453

contact@system3e.com
+48 533 344 918
www.system3e.com



Discover the world's only self-insulating, jointless construction system made from perlite!

SYSTEM 3E technology is designed to revolutionize the construction industry by focusing on values that matter most to our clients. Thanks to our technology, you can speed up and simplify the building process and cut costs while maintaining high quality and eco-friendliness.

LEGO-like simplicity

Each 3E element joints together perfectly, making building enjoyable and error-free for everyone. Every project designed or adapted to SYSTEM 3E comes with detailed wall layouts, providing step-by-step placement instructions that ensure anyone can confidently assemble their project.

Building with 3E technology is as easy as assembling Lego bricks!

Quick quality, guaranteed

SYSTEM 3E technology is engineered for efficiency. Impressively, you can construct 1 sqm. of the wall in just 4.5 minutes. What makes this possible?

- **Precision manufacturing:** each SYSTEM 3E element is manufactured with the highest accuracy, ensuring flawless assembly.
- **Perfect fit:** the 3E elements interlock seamlessly, resulting in straight walls and precise 90-degree corners.
- **No mortar or glue:** SYSTEM 3E eliminates the need for mortar or glue in the wall assembly, simplifying the construction process.

Future of sustainable construction

Made from perlite, a natural volcanic rock, 3E elements provide excellent insulation, enhancing energy efficiency and reducing environmental impact. Our commitment extends to using recyclable materials, minimizing waste, and reducing energy use.

SYSTEM 3E combines speed, simplicity, and sustainability for cutting-edge, eco-friendly construction. **Build smarter with SYSTEM 3E!**

[LEARN MORE →](#)

MODULAR by SYSTEM 3E

SYSTEM 3E S.A.
Rondo ONZ 1
00-124 Warsaw

KRS: 0000796932
NIP: 5252796952
REGON: 383992453

contact@system3e.com
+48 533 344 918
www.system3e.com

Follow us:

